

[SmartNL-RF1000]

Fix mount RFID Reader



SmartNL-RF1000 is a low cost UHF RFID Reader from SmarTerminal. Its simple design allows organizations to deploy the unit in office and commercial environment as a fix mount unit.

RF1000 Fixed RFID Reader

- ▶ **AIR INTERFACE PROTOCOLS**
EPC global UHF Gen 2, ISO 18000-6C, EPC Class 1
- ▶ **FREQUENCY RANGE**
US : 902MHz ~ 928MHz
EU : 865.6MHz ~ 867.6MHz
- ▶ **CERTIFICATIONS**
FCC, CE
- ▶ **COMMUNICATIONS INTERFACE**
RS232, Ethernet 100Mbps (RJ45 Connector)
- ▶ **ENVIRONMENT**
Operating Temperature : -20℃ to 50℃ (-4°F to 122°F)
Storage Temperature : -30℃ to 75℃ (-22°F to 167°F)
Humidity : 10% to 90%(non-condensing)
- ▶ **DIMENSIONS**
 - Length : 107mm (4.2 in.)
 - Width : 98mm (3.8 in.)
 - Height : 31mm (1.2 in.)
 - Weight : 476g (1.04 lbs)
- ▶ **USER INTERFACE**
 - Antenna : 1-4, Ethernet, RS-232
 - Indicator : 3 LED
- ▶ **POWER**
 - AC/DC Converter input 110/220V AC (25 watts)



I/O part-Power Jack / Ethernet / Serial



4 Antenna connection

[RF Antenna]

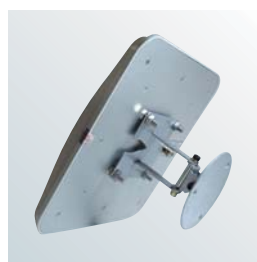
SmartNL-AT1/AT2 Antenna



- ▶ **PERFORMANCE CHARACTERISTICS**
Operation Frequency: 902MHz~928MHz
- ▶ **CENTRAL FREQUENCY**
SmartNL-AT1 : 915MHz (L), 919MHz (C)
SmartNL-AT2 : 915MHz (L), 918.5MHz (C)
- ▶ **POLARIZATION: LINEAR, RHCP**
Voltage standing wave ratio : 1.3:1 max. Ratio
- ▶ **ENVIRONMENTAL PROTECTION**
IP65 Sealed
- ▶ **BEAM WIDTH**
SmartNL-AT1 : 70 degree typical (L)/ (C)
SmartNL-AT2 : 70 degree typical (L), 65 degree typical (C)
- ▶ **TYPICAL GAIN**
SmartNL-AT1 : 8.0dBiL (L)/ 5.3dBiL (C)
SmartNL-AT2 : 8.0dBiL (L)/ 6.0dBiL (C)
- ▶ **DIMENSIONS**
 - SmartNL-AT1 :
 - Length: 200mm (7.9 in.)
 - Thickness: 30mm (1.1 in.)
 - Weight: 600g (1.1 lbs.)
 - SmartNL-AT2:
 - Length: 260mm (10.2 in.)
 - Thickness: 40mm (1.2 in.)
 - Weight: 800g (1.3 lbs.)



SmartNL-AT1



SmartNL-AT2