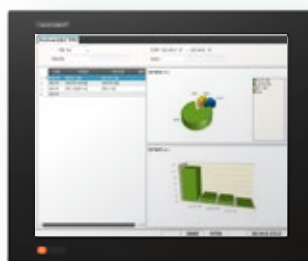


SmarTerminal™

# SP series

SP15, SP17, SP21



Wi-Fi



Bluetooth



-20°C ~ 60°C



Fanless



IP 65  
(Front)



Full HD  
1080  
(SP21)

MODEL			SP15	SP17	SP21
LCD	Size		15”	17”	21”
	Resolution		1024 x 768, XGA	1280 x 1024, SXGA	1920 x 1080, Full HD
	Brightness(cd/m²)		250	350	300
Touchscreen			resistive 5 wire, TFT Touch screen display,		
System	OS		Windows 7 / Windows 8 / Windows 10		
	CPU		Intel® J1900 Celeron (Quad Core) / Optional : i3, i5		
	RAM (Memory)		DDR3 4GB RAM (Up to 8GB)		
	Storage		2.5” SATA III (Optional : 500G HDD, 60G SSD, 120G SSD)		
	Input / Output		1 x VGA , 4 x USB , 2 x Ethernet , 3 x RS232 ( Changeable 1x 422/485)		
System Cooling			Fanless		
Peripheral	WLAN		IEEE 802.11 a/b/g/n		
	Bluetooth		V2.1 + EDR Class 2		
Physical	Mounting		Wall, Stand, Vehicle, Rack mounting (VESA 100 x 100)		
	Color		Modern Black		
	Dimensions	WxHxD (mm)	376 x 300 x 70	418 x 345 x 70	548 x 352 x 70
		WxHxD (in)	14.8 x 11.8 x 2.8	16.5 x 13.6 x 2.8	21.6 x 13.9 x 2.8
	Weight		4.3kg (9.48lbs)	5.2kg (11.5lbs)	7.0kg (15.4lbs)
	Cut-out(WxH)(mm)		363*288	402*323	532 * 336
Environment	Operating Temperature		-20°C to 60°C (-4°F ~ 140°F)		
	Storage Temperature		-30°C to 70°C (-22°F ~ 158°F)		
	Humidity		5% to 95% RH Non-condensing		
	IP Level		IP 65 (Front)		
	Certificate		KCC, FCC, CE		
Power	AC/DC		Input 110/220V (60 watts) AC for Output 12V DC systems		